



Cochrane

Project Transform

Author management

Cochrane Canada Symposium LSR Workshop

13 May 2017

Anneliese Synnot

Cochrane Australia, Monash University

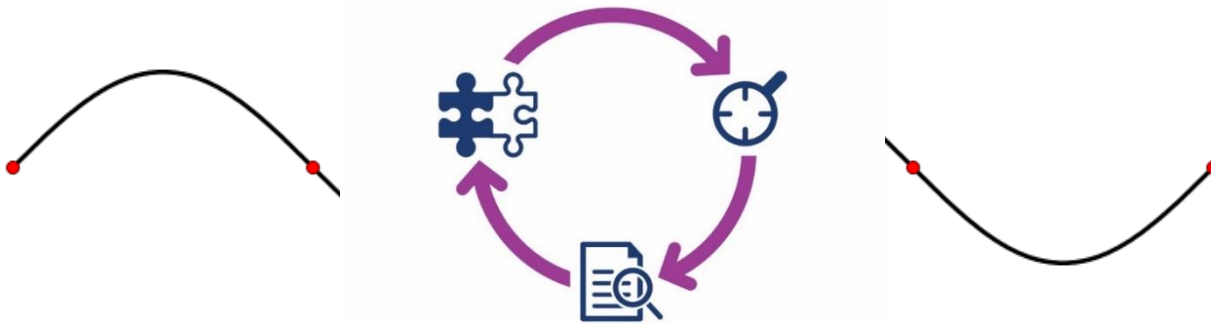
Trusted evidence.

Informed decisions.

Better health.

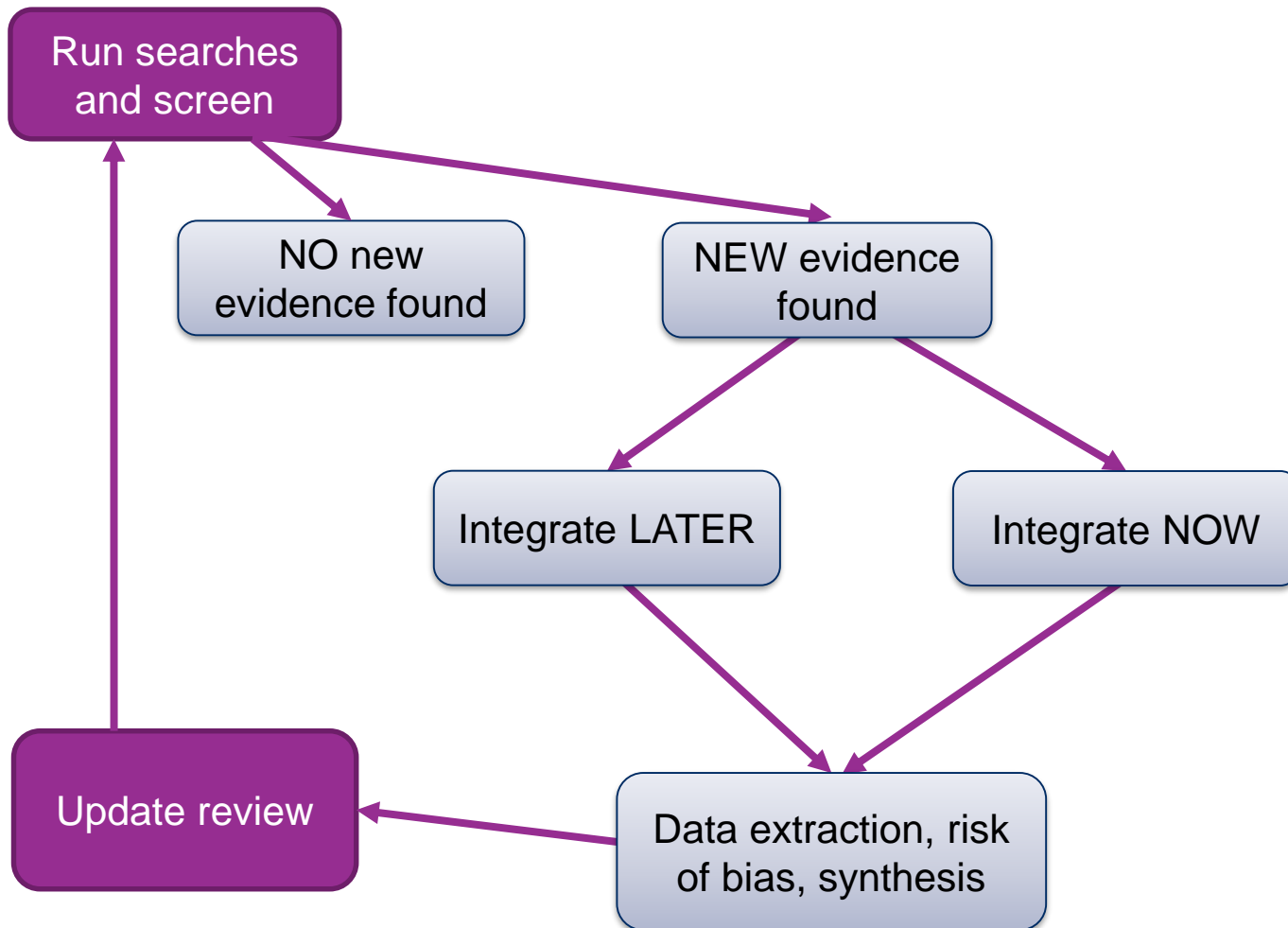


Intermittent to continuous activity



- More work OR working differently and more efficiently?

Basic LSR process





Author / team implications

- Planning for ongoing contribution (do and maintain!)
 - Frequent, small commitment from authors
 - Needs clear project management
- Size of author team
 - Larger teams may be needed
- Evolving author team
 - Maintaining institutional memory and consistent approach critical





Author / team implications

- Academic credits
 - Existing and new authors need appropriate acknowledgement via new citations
- Funding
 - Funding tends to be time-limited, may need creative ways to fund an ongoing commitment





Editorial implications

- Workload
 - Small, frequent commitment likely
 - Must be able to be responsive
 - If new frequent new publications = ↑ workload
- Working in new ways
 - Encourages a closer relationship with authors
 - Collaborative approach to deciding to integrate new studies
 - Establishment of pool of LSR peer reviewers





Peer review implications

- More selective approach to peer review, i.e.
 - Minimal changes may not need peer review, or
 - ‘Selective’, i.e. fewer reviewers / or fewer sections of review
- LSR peer review team ‘on standby’
- Likely to benefit from consistent peer reviewers over time but may be an issue of independence of reviewers over time.



(Living) systematic review enablers

Category	Item	Description
Production	Workflow and collaboration tools	Tools and platforms for SR authoring (e.g. Covidence, EPPI-Reviewer)
	Semi-automation	Machine assisted SR production processes (e.g. machine learning, Evidence Pipeline)
	Data repositories and linked data	Repositories of structured SR data (e.g. Cochrane linked data project)
	Participation and the crowd	Large and diverse author groups, citizen and crowd participation (e.g. TaskExchange, Cochrane Crowd)



Project Transform

Questions / comments?

Or email: Anneliese.Synnot@monash.edu